

# Heaven Sent

*Pacific Northwest Angelman Syndrome Foundation*

## Henderson Golf Tourney A Huge Success

We finally have the results you have been waiting for. Drum roll please.....Our net result was approx. \$13500! Compared to 2010 of \$7800. We did awesome! We had 120 golfers compared to 104 in 2010 so that made a big difference. We also did much better on the mulligans and raffles and silent auction. We spent less on golf bag giveaways and prizes due to the awesome donations by everyone! New this year was a live auction in which our MC Mike auctioned off a casino package, two Dave Henderson photos and an electric guitar signed by Dave Mathews himself.

Thank you to all our volunteers and especially to

Corbin (donation queen), Loni (bag stuffer, basket maker and go to gal) and Gloria (Sherris personal assistant for the day).

The PNWASF would also like to thank our hole sponsors Superior Marine, Chuck Olson Chevrolet, DeFalco Family Foundation, Washington Patrol Division and the Dennis Family.

Last but not least thank you to all of the golfers that turned out this year. The weather did not cooperate but it did not slow down any of the players. True dedication to our foundation and to the game.

See you all next year!



Birthday Boy Chris Luna and his lovely wife Gloria



Ready to Roll

### Inside this issue:

North End Picnic	2
South End Picnic	2
The Ek Family	3
Sells/Reynolds Family	3
Board of Directors	4



Story Time at Great Wolf Lodge

## Great Wolf Lodge Outing

About 10 families were able to attend this year's trip to the Great Wolf Lodge and Water Park in Grand Mound WA. The Pacific Northwest Angelman Syndrome Foundation was able to provide one nights lodging and entrance into the water park and what fun it was with so much to enjoy at the hotel.

Everyone loved the many pools and slides in the water park along with the Magic Quest game, story time and other activities. The best part may have been sitting in the great room talking and connecting with other families.



The Parker Family Enjoying Story Time



## Summer Picnics

### North End Picnic



Stewart Heights Pool in Tacoma

The Pacific Northwest Angelman Syndrome Foundation was host to Seven Families at the north end picnic this year. Our angels were happy as clams in the water park, no one wanted to leave when it was time to go home. The families who attended were the DeRosa/Luna's, Thompson's, Rein's, Platts's, Hegge's, Garrick's, and the Weisenfeld's. We had good food and great company at the Stewart Heights Pool in Tacoma.



The Garrick Family Enjoying The Hot Tub



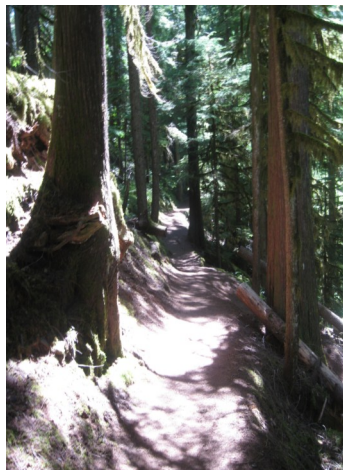
Johanna and John Weisenfeld



Eugene with Tyler and Keith Thompson

### South End Picnic

*After the picnic families enjoyed the park with all of it's beautiful waterfalls*



The South End picnic was held June 25th at Silver Falls State Park at the North Falls Lodge. We had a great turnout this year with about 10 families showing up . The weather was perfect and families enjoyed the park with all of it's beautiful waterfalls after the picnic was over.

Many thanks to Rhonda Kirtland for organizing this event for us. PNWASF supplied all the sandwich fixings and families brought side dishes for all to enjoy. The kids had a blast playing outside and inside the large space . We can't wait to see what will be planned for next year.



**Save the Date**

Mark you calendars for our annual business meeting and adult retreat being held Friday March 2nd thru Sunday March 4th. Portland Oregon is the destination this year but the hotel and dinner has yet to be decided.

## PNWASF Families Attend SLC Biennial Conference.

### The Ek Family

Hello. My name is Rebekah Ek. My husband, Steven, and I were recipients of a scholarship given by the PNWASF to the 2011 biennial conference in Salt Lake City. We are the parents of an angel, Laura (7), and two other beautiful children: Evangeline (8) and Jack (6).

We were, of course, delighted to receive the scholarship. What we didn't know was how much it would change our lives!

Having never attended a conference before, we didn't know what to expect. What we found was a huge extended family...everyone was so friendly, so helpful, and so willing to share. To

share ideas, laughter, tears, experiences, and UNDERSTANDING.

I remember feeling 'happily overwhelmed' several times during the conference. The wealth of knowledge gained from the speakers and other parents was awesome. We learned valuable information from one end of the spectrum to the other (i.e.: locks for the refrigerator, felt in door jams to quiet the banging :), teaching techniques, hippo therapy, lots of seizure information....)

Through all of our experiences during the conference, we came home to our family with a renewed vigor

to continue giving Laura the best life we can. Parenting a special needs child is fun and exciting, but as we all know, it is also tiring. This said, the conference came just at the right time. We were tired and losing sight of our goals. Upon leaving SLC, it felt we had got the wind back under our wings.

From the bottom of our hearts, THANK YOU, PNWASF for the scholarship! We hope to return to many more conferences, and want to encourage anyone who hasn't gone to take the leap and give it a try!

*Through all of our experiences during the conference, we came home to our family with a renewed vigor to continue giving Laura the best life we can.*

### Sells/Reynolds Family

Thank you very much for choosing us for the 2011 ASF Biennial Conference Scholarship in Salt Lake City. My son Christopher just graduated from high school with a modified diploma and is eligible to attend two more years at school in the Vocational Department (way reduced hours of course).

This conference was perfect timing for us. Sometimes my head spins every time I'm asked, "what are you going to do with him", "are you going to place him somewhere?" "what, what, what???" Of course we have our emotional attachments and we want to answer, he will stay with me forever, but our reality tells us what can we do for him now for a quality of life in the future. Gulp.

Chris and I live alone, so it is a big change for both of us. Even though I do not have the exact answers, having the ability to attend this conference, speaking with other parents in this transition period, and of course the way Dr. Sharon

Katz always makes everything seem so smooth and wonderful gave me a peaceful feeling and that Chris is going to be OK!

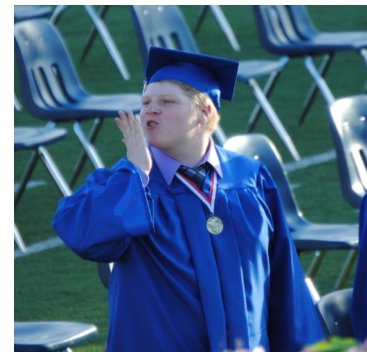
I thought it was funny during the Just for Mom's Session, someone stood up and asked if there were any other mother's diagnosed with depression and bi-polar. I think doctor's sometimes like to label "A Life With An Angel".

I was hoping to meet up with others from PNWASF at the state breakfast, but I must have ate and left too early.

One of the great things about this conference was being handed a workbook that had most of the speakers power points printed out and any contact information. It is a great tool.

Thank you again for this wonderful opportunity. It made a huge difference. And Thank you for all you do for the PNWASF territory.

Dawn Sells & Christopher Reynolds





**Pacific Northwest Angelman Syndrome Foundation**

12932 Kent-Kangley Rd  
#375  
Kent, WA 98031

Phone: 866-330-9256  
E-mail: pnwasf@pnwasf.org

**We're On The Web!**  
**www.pnwasf.org**

**Be Not Afraid of Growing Slowly,  
Be Afraid Only of Standing Still**

**Newsletter Information**

Please submit articles, pictures, prose or angel tips for the newsletter to:

Robin Marx  
91029 S. Miller St.  
Coburg, OR 97408

Or email to Robin at  
miroberkel99@yahoo.com

**Article Submission Deadlines**

Winter: January 15  
Spring: May 15  
Summer/Fall: September 15

PNWASF  
12932 Kent-Kangley Rd. #375  
Kent, WA 98031

Phone: 866-330-9256

*Although families are encouraged to share their experiences, it is the Policy of the PNWASF not to support or endorse any particular treatment, therapy or medication.*

**PNWASF Board of Directors**

Jon Hegge/ President  
Everett, WA  
2011-2013

Sherri Rein/ Treasurer  
Kent, WA  
2010-2012

Robin Marx/Secretary  
Coburg, OR  
2011-2013

Gloria DeRosa/ Director  
Port Orchard, WA  
2011-2013

Corbin Thompson/Director  
Tacoma, WA  
2010-2012

Erin Platts/Director  
Covington, WA  
2010-2012

Rhonda Kirtland/Director  
Portland, OR  
2011-2013

Justin Platts/Director  
Tacoma, WA  
2011-2013